

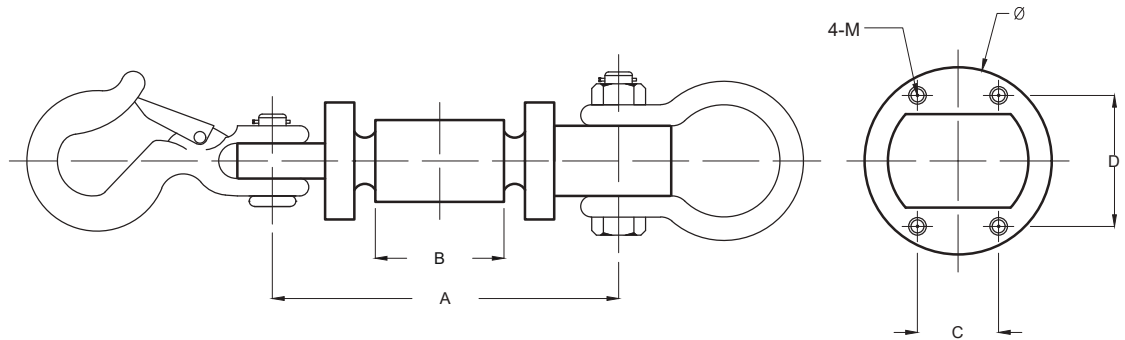
- Type:** Tension
- Material:** Alloy Steel
- Protection:** IP 67
- Features:** It has high precision, strong capability of overload protection and anti-deflective load completed hooks and rings are available
- Application:** Special load cell for crane scales



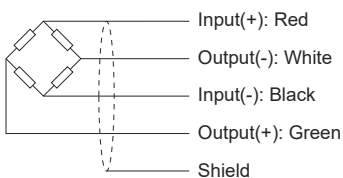
Specifications:

| | | |
|---------------------------------------|------------|---------------------------------|
| Capacity | | 1.0t / 2.0t / 3.0t / 5.0t / 10t |
| Accuracy Class | | C3 |
| Max. Number of Verification Intervals | n_{max} | 3000 |
| Minimum Load Cell Verification Level | V_{min} | $E_{max}/7000$ |
| Temperature Effect on Zero | %FS/10°C | $\leq \pm 0.0160$ |
| Temperature Effect in Sensitivity | %FS/10°C | $\leq \pm 0.0180$ |
| Combined Error | %FS | $\leq \pm 0.0230$ |
| Creep | %FS | $\leq \pm 0.0190$ |
| Output Sensitivity | mv/v | 1.2 ± 0.01 |
| Input Resistance | Ω | 385 ± 15 |
| Output Resistance | Ω | 350 ± 5 |
| Insulation Resistance | M Ω | ≥ 5000 |
| Zero Balance | %FS | ≤ 1.0 |
| Temperature, Compensated | °C | -10 ~ +50 |
| Temperature, Operating | °C | -20 ~ +60 |
| Excitation, Recommended | v | 8 ~ 12 |
| Safe Overload | %FS | 200 |
| Ultimate Overload | %FS | 300 |
| Standard Cable length | m | 10 |

Dimensions:



| CAP.(t) | A | B | C | D | Φ | M |
|---------|-----|-----|----|----|----|----|
| 1 | 130 | 74 | 16 | 37 | 48 | M6 |
| 2,3 | 150 | 82 | 22 | 47 | 62 | M6 |
| 5 | 188 | 103 | 28 | 56 | 72 | M6 |
| 10 | 230 | 120 | 28 | 66 | 82 | M6 |



All dimensions: mm.