

**Type:** Compression (Spoke Type)

**Material:** Stainless Steel

**Protection:** IP 68

**Features:** Anti-Corrosion  
Low Profile

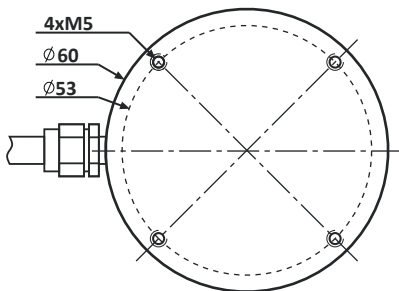
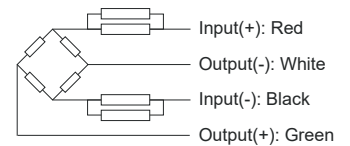
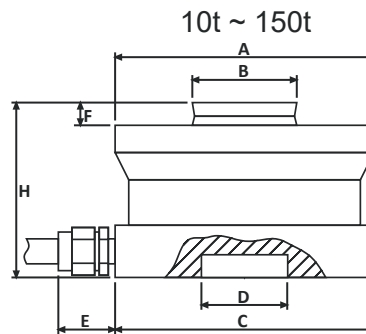
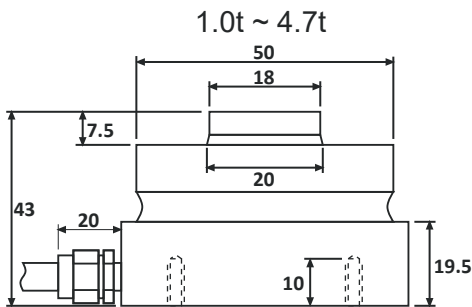
**Application:** Truck & Silo Scales  
Hopper Weigher  
Industrial Weighers



### Specifications:

Capacity		1.0t / 2.2t / 3.3t / 4.7t / 10t / 15t / 22t / 33t / 47t / 68t / 100t / 150t
Accuracy Class		<b>C3</b>
Max. Number of Verification Intervals	$n_{max}$	3000
Minimum Load Cell Verification Level	$V_{min}$	$E_{max}/10000$
Temperature Effect on Zero	%FS/10°C	$\leq \pm 0.0180$
Temperature Effect in Sensitivity	%FS/10°C	$\leq \pm 0.0200$
Combined Error	%FS	$\leq \pm 0.0250$
Creep	%FS	$\leq \pm 0.0190$
Output Sensitivity	mv/v	$2.85 \pm 0.015$
Input Resistance	$\Omega$	$1450 \pm 10 / 4400 \pm 100$
Output Resistance	$\Omega$	$1405 \pm 5 / 4010 \pm 10$
Insulation Resistance	M $\Omega$	$\geq 5000$
Zero Balance	%FS	$\leq 1.0$
Temperature, Compensated	°C	-10 ~ +50
Temperature, Operating	°C	-30 ~ +70
Excitation, Recommended	v	10 ~ 12
Safe Overload	%FS	150
Ultimate Overload	%FS	250
Standard Cable length	m	8 (1.0t ~ 4.7t) / 12 (10t ~ 33t) , 16 (47t ~ 150t)

### Dimensions:



CAP.(t)	A	B	C	D	E	F	G	H
10 - 22	75	30	75	25	20	6.5	7	50
33	95	40	95	25	20	10	7	65
47	130	60	130	25	20	14	7	75
68	130	60	130	25	20	14	7	85
100	150	70	150	25	20	16	7	90
150	150	70	150	25	20	16	7	100

All dimensions: mm.