

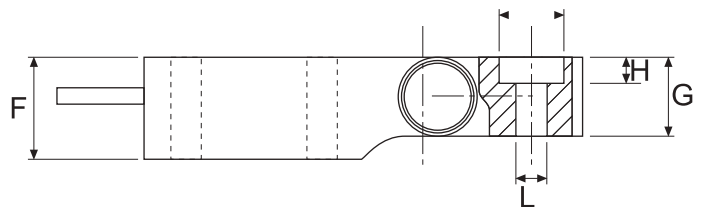
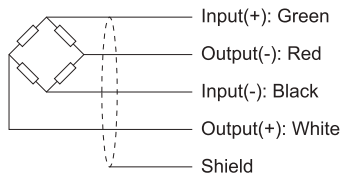
- Type:** Single Ended Beam
- Material:** Stainless Steel
- Protection:** IP 68
- Features:** Hermetically Sealed
Robust and wide mounting surface
Suitable for harsh environment
Current calibrated (sc-option)
- Application:** Pallet Scale
Hopper Scale
Process Weighing
Food industries
Overhead Track



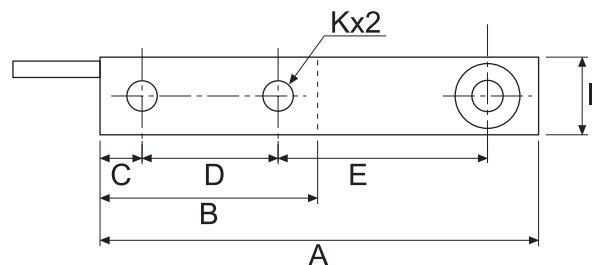
Specifications:

Capacity		500kg / 1.0t / 2.0t / 5.0t / 7.5t / 10t
Accuracy Class		C3
Max. Number of Verification Intervals	n_{max}	3000
Minimum Load Cell Verification Level	V_{min}	$E_{max}/10000$
Temperature Effect on Zero	%FS/10°C	$\leq \pm 0.0165$
Temperature Effect in Sensitivity	%FS/10°C	$\leq \pm 0.0137$
Combined Error	%FS	$\leq \pm 0.0230$
Creep	%FS	$\leq \pm 0.0165$
Output Sensitivity	mv/v	2.0 ± 0.004
Input Resistance	Ω	350 ± 3.5
Output Resistance	Ω	350 ± 3.5
Insulation Resistance	M Ω	≥ 5000
Zero Balance	%FS	≤ 1.0
Temperature, Compensated	°C	-10 ~ +40
Temperature, Operating	°C	-35 ~ +65
Excitation, Recommended	v	5 ~ 15
Safe Overload	%FS	150
Ultimate Overload	%FS	300
Standard Cable length	m	5.0

Dimensions:



CAP.(t)	A	B	C	D	E	F	G	H	I	J	K	L
0.5~2	203	101.5	19	63.5	98.5	47.5	36.5	12	36.5	30.5	14	17.5
5,7.5	235	111	20.5	66.5	124	70	47.5	16	47.5	41.5	22	25.5
10	235	111	20.5	66.5	124	70	58.5	16	55	41.5	25	25.5



All dimensions: mm.